



User Manual

DE10

SLIM DIGITAL
HINGED DOOR LOCK

DE10 | SLIM DIGITAL HINGED DOOR LOCK

Special Attention:

1. Mechanical keys please keep outdoor, just in case keys lock in doors.
2. Please replace for the battery when low wattage alarm.
3. Reading this manual carefully before installation, and keep it for future reference.

1. Introduction:

1.1. Lock structure



1.2. Packing List

💡 Check the following drawing to check whether the package contains all the parts

NO	NAME	QTY	NO	NAME	QTY
1	Front Panel	1	12	Sliding Screws: M5x11mm	1
2	Back Panel	1	13	Mortise Screws: M5x10mm (For Aluminium Door)	4
3	Mortise	1	14	Mortise Screws: M4x20mm (For Wooden Door)	5
4	Card	3	15	M5x25mm Screw	1
5	Mechanical Key	2	16	M5x30mm Screw	1
6	Waterproof Rubber Plate	2	17	M5x40mm Screw	1
7	U-Clip	1	18	M5x50mm Screw	1
8	User Manual	1	19	M5x60mm Screw	1
9	Strike & Strike Box	1+1	20	M5x70mm Screw	1
10	Screw Stubs: M5x30mm	2	21	60mm Square shaft	1
11	Screw Stubs: M5x35mm	2	22	80mm Square shaft	1

1.3. Specifications

SUITABLE FOR MODELS	DE10	DOORS APPLICABLE	Aluminium door Wooden door
MATERIALS	Handle: SS304 Panel: Aluminium alloy	WORKING VOLTAGE	6V/4x AA Batteries
LOCK WEIGHT	2.5 KG	DOOR THICKNESS TO FIT	35-65mm
UNLOCKING WAY	Bluetooth Fingerprint (option) Password Card Mechanical key Gateway(option)	DATA CAPACITY	Fingerprint: 200 Password: 150 Card: 200
COLOUR	Silver Black	WORKING TEMPERATURE	-10°C-55°C
LOW WATTAGE ALARM	Less than 4.8V	WORKING HUMIDITY	0-95%

1.4. System Initialization

System Initialization

- Open the cover plate of the front panel,
- Long press the "Reset" button on the back panel for 5s,
- Press "000#", and the initialization is complete

RESET BUTTON

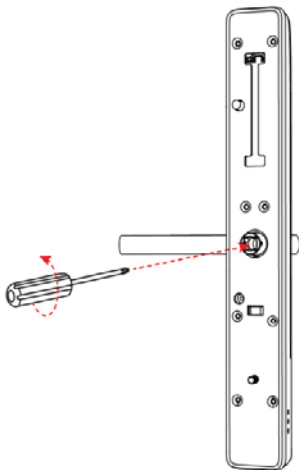


2. Installation:

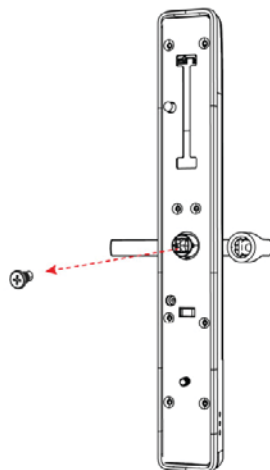
2.1. Turn the Handle

Notice:

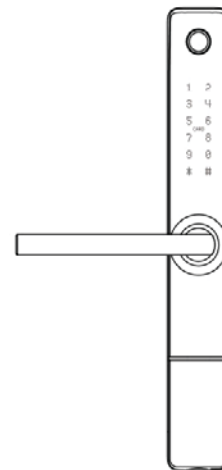
Adjust the handle according to the direction you open the door.



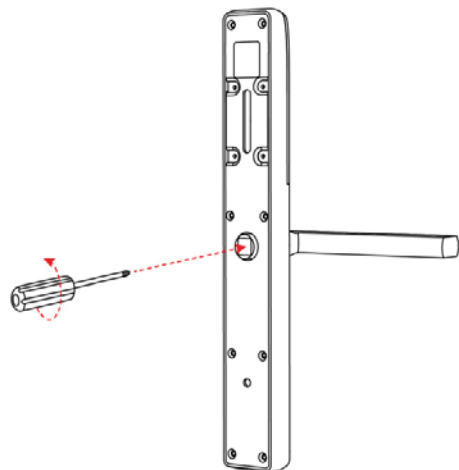
1. Turn the handle on the front panel
loosen the screws on the handle
counterclockwise



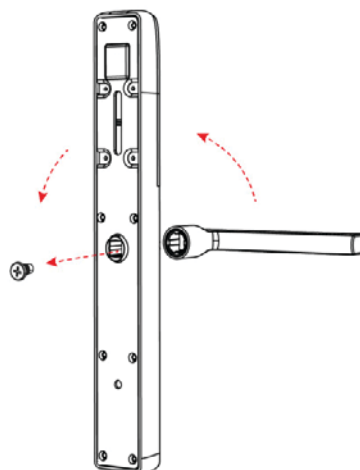
2. Remove the handle



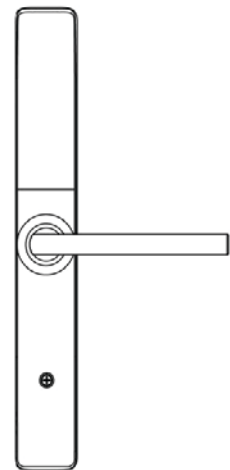
3. After adjusting the direction of
the handle insert it into the handle
seat and re-lock the screw of the
handle to complete the turning



1. Turn the handle on the front panel
loosen the screws on the handle
counterclockwise



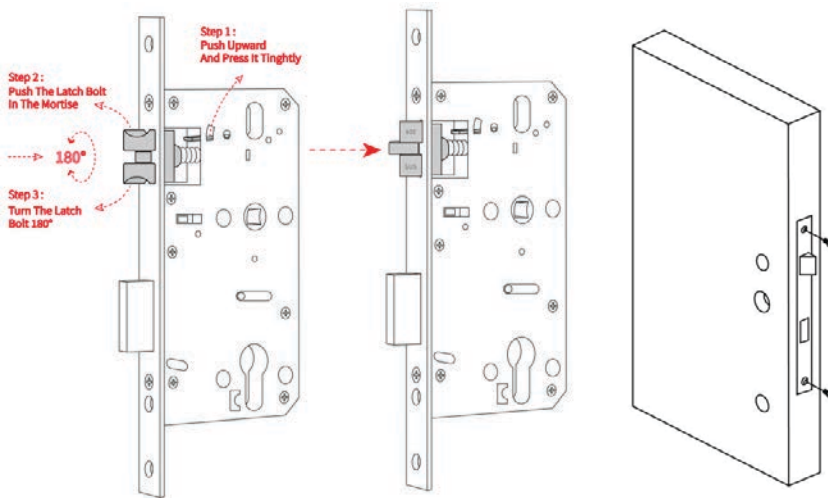
2. Remove the handle



3. After adjusting the direction of
the handle insert it into the handle
seat and re-lock the screw of the
handle to complete the turning

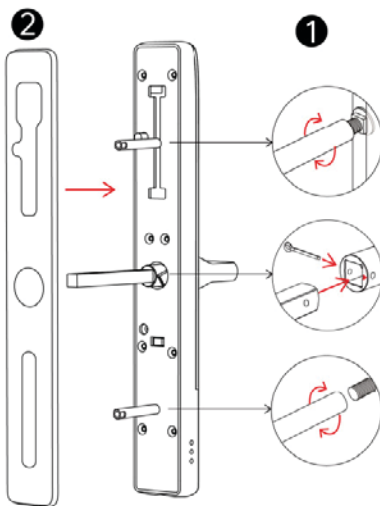
2.2. Installation Diagram (For 3585)

Step 1. Install Mortise



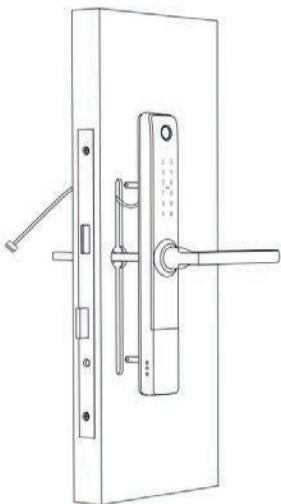
1. According to the size indicated by the hole icon, open the corresponding hole position as needed, and install the lock body.
2. Adjust the direction of the bolt according to the door opening direction

Step 2. Install Sliding Screw Casing and Square Shaft



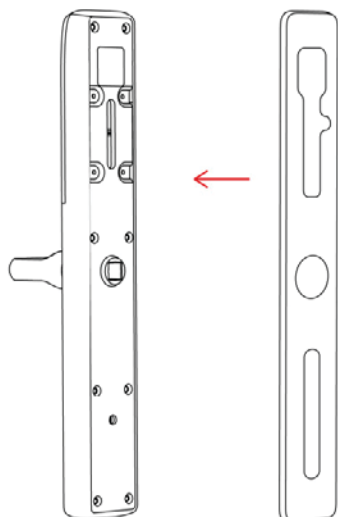
1. Choose a screw column suitable for the thickness of the door install it on the front panel,
2. Install waterproof in alignment with the holes
3. Install the square shaft, put on the U-Clip, the arrow is in the same direction as the handle

Step 3. Install Front Panel



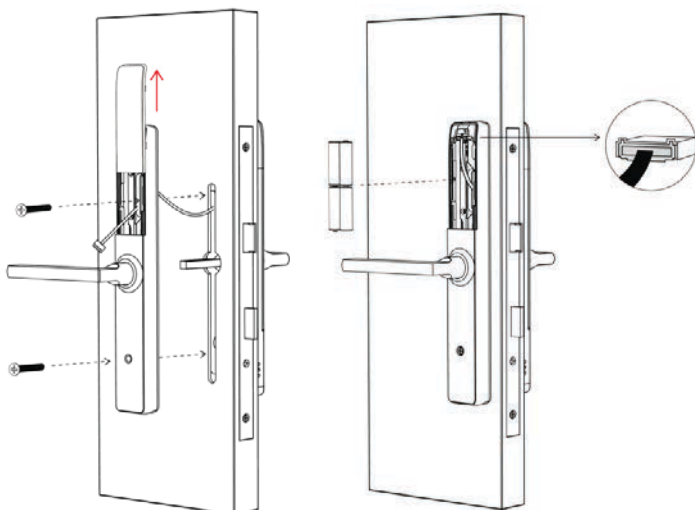
1. Align the front panel of the installed accessories with the holes of the door and install.

Step 4. Install Back Panel



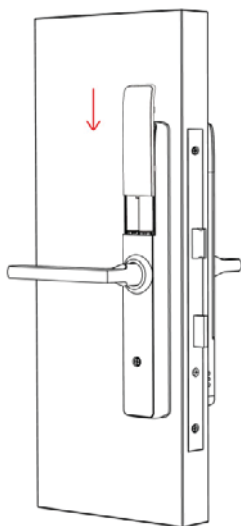
1. Install another waterproof pad to the rear panel

Step 5. Connect Front and Back Panels Wires



1. Fix the front and back panels with screws suitable for the thickness of the door
2. Connect the front power cord to the back panel

Step 6. Install the Battery



1. Install 4x AA batteries
2. Install the battery cover

3. Operation:

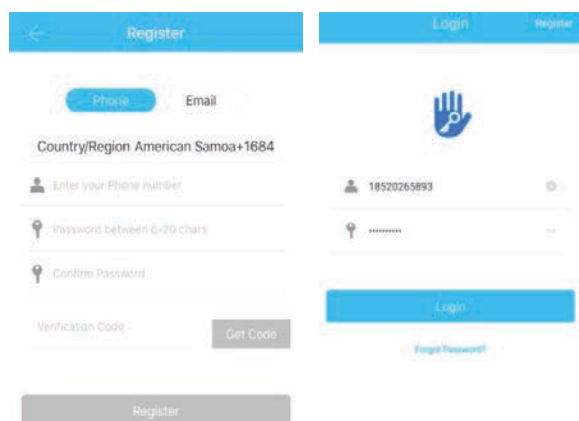
3.1. Registration



The software (iOS version) can be downloaded from the app store, and the Android version can be downloaded from the application store of Google play, Yingyongbao, Baidu, Ali, 360, Huawei, and Xiaomi.

3.2. Connect lock to the phone

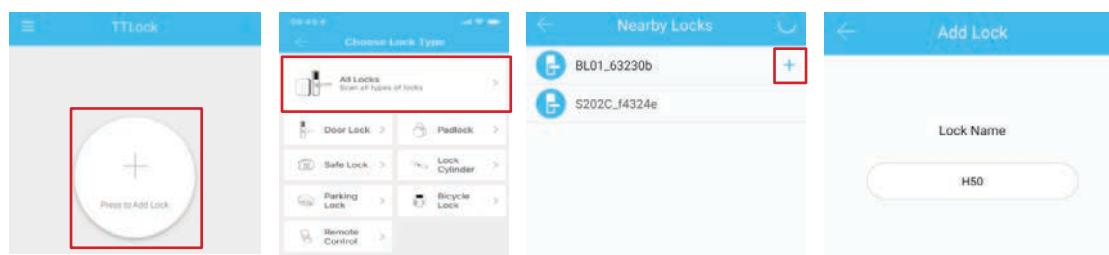
1. Please scan the QR code to download the app
2. You can also search for TTLock in the APP store (Google Play) to download
3. Register a new account (phone number or email) or login with an existing account
4. Touch the lock screen to light, click "+ Add Lock"
5. The lock nearby will appear on the phone screen, Click "+"
6. Re-name the lock
7. The lock added successfully



TTlock users can register the account by mobile phone and Email which currently support 200 countries and regions on the world. The verification code will be sent to user's mobile phone or email, and the registration will be successful after the verification.


3.3. Add locks

TTLock supports multiple types of lock devices. The lock needs to be added by the app after entering the add mode. Generally, a lock that has not been added, as long as the lock keyboard is touched, it will enter the add mode. The default password is 123456 if not added by the phone.



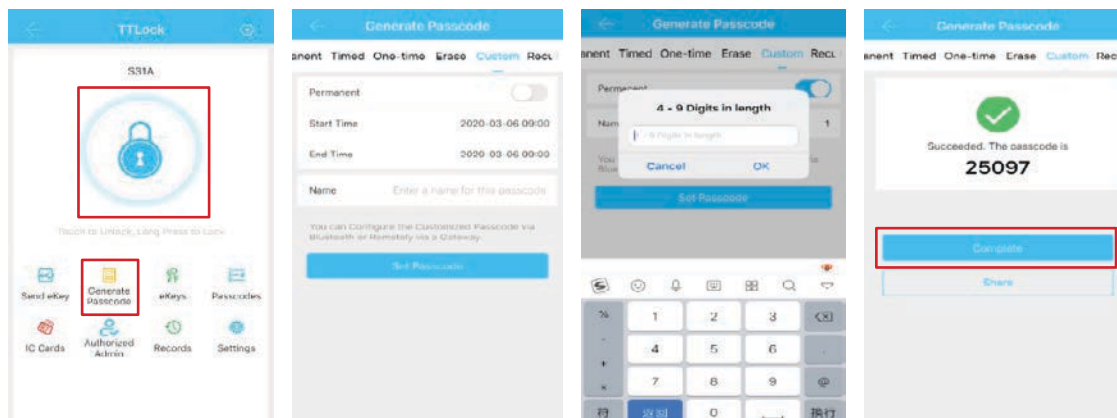
3.4. User Management

3.4.1. Bluetooth Management


Make sure there is no problem with Bluetooth communication. After connecting the phone to the door lock as above, Click “” to unlock. (The phone is within 5 meters from the door lock)

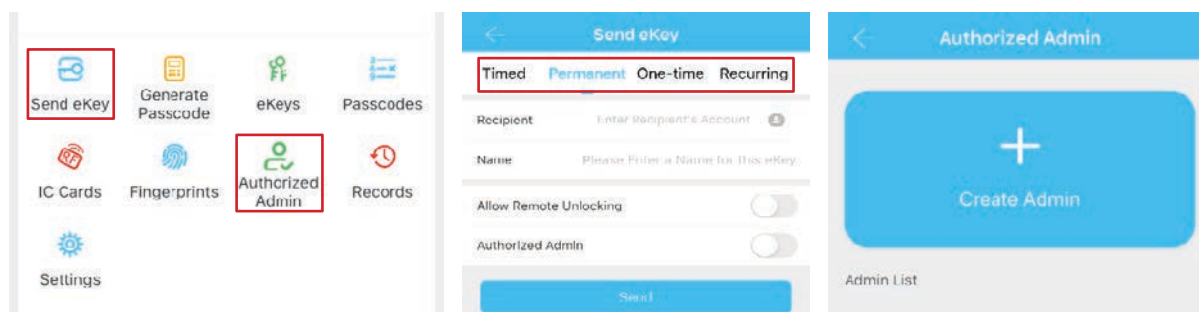
3.4.2. Setting Passcode

Passcodes are also a way to unlock. After entering the passcode on the locked keyboard, press the unlock button in the lower right corner to unlock. Passcodes are divided into permanent, time-limited, single, clear, cycle, and custom. (You can share the Passcode to other user via WeChat, SMS, Email, Messenger, WhatsApp)



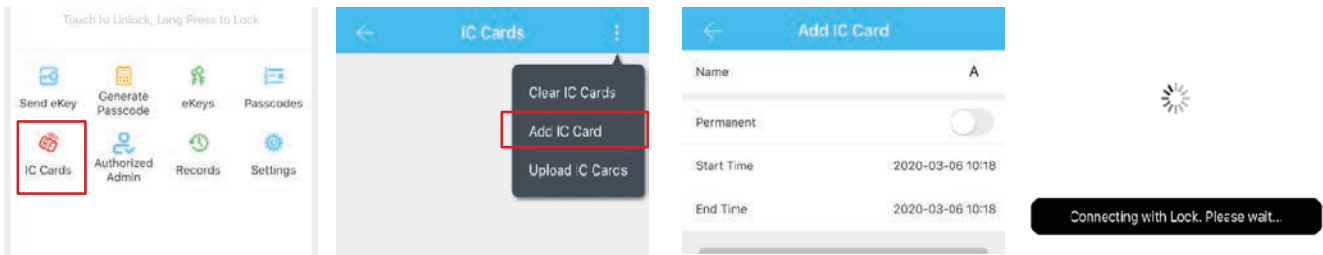
3.4.3. Send e-Key

Click on the “” as shown in figure, you can send the eKey to other users of TTlock to authorize the unlock (the receiver must be download the APP and set up an account) → Select e-key format (Timed, permanent, One-time, Recurring) → Enter recipient's account of TTlock, set the name and effective time of the eKey, Can choose to allow remote unlocking or disallowing, authorized administrator or not authorized, as shown in figure → Send → The recipient's account has Bluetooth unlock permission



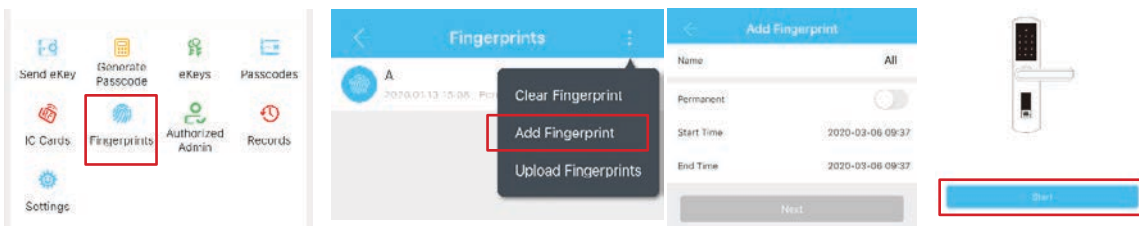
3.4.4. Add Card

Supports opening doors through various IC cards. Before an IC card is used to open the door, it needs to be added first. The adding process needs to be performed by the app beside the lock. The validity period of the IC can be set, it can be permanent, or it can be limited in time.




3.4.5. Add Fingerprint


The premise that a fingerprint can be used to open a door is that it needs to be added first. The adding process needs to be performed by the APP beside the lock. The fingerprint expiration data can be set, it can be permanent, or it can be limited. After setting, you can modify its validity period.




3.4.6. e-Key Management

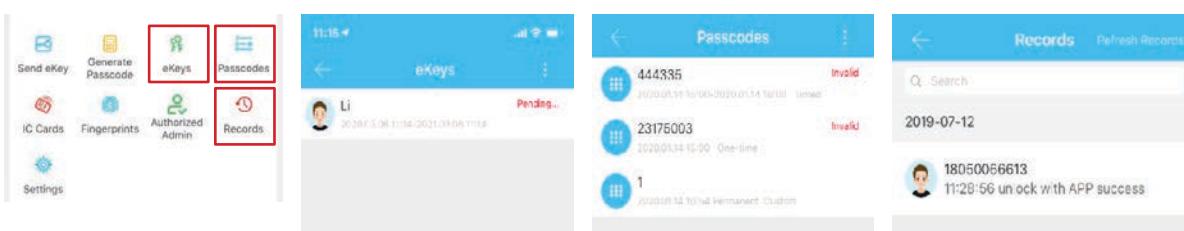
Click “  “ The manager can delete ekey, reset ekey, send and adjust the ekey, meanwhile he can search the lock record.

3.4.7. Passcode Management

Click “  “. All generated passwords can be viewed and managed in the password management module. This includes a password change, password deletion, password reset, and password unlock record.

3.4.8. Unlock Records

Click “  “ you can query your unlock record as shown in figure.

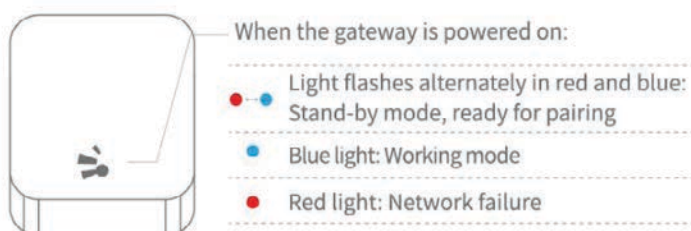


3.5. Gateway Management (Optional)

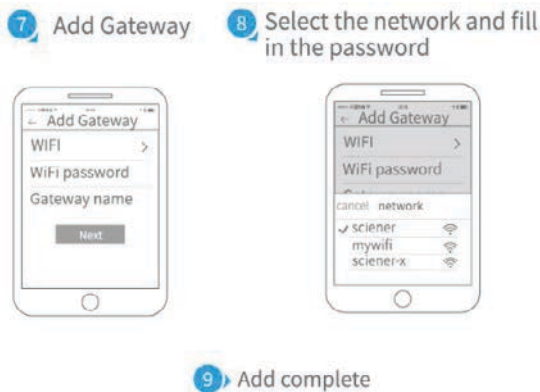
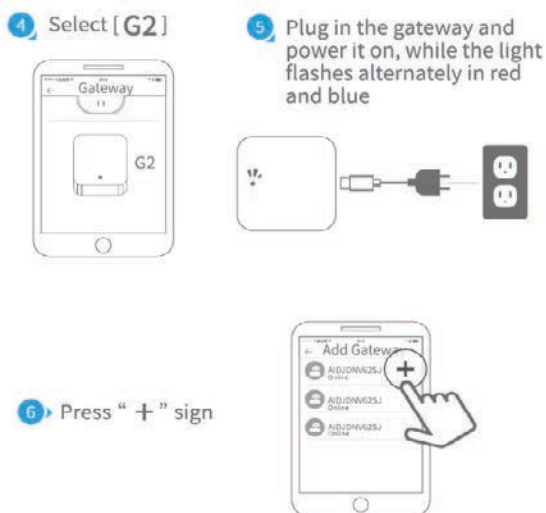
The TTlock is directly connected via Bluetooth, that is why it is not attacked by the network. The gateway is a bridge between smart locks and home WIFI networks. Through the gateway, the user can remotely view and calibrate the lock clock, read the unlock record. Meanwhile, it can remotely delete and modify the password.

3.5.1. Add Gateway

Light Status



Pair the Gateway with APP



⚠ Notice: If times out, please power off and try it again.

3.5.1. Add Gateway

After a short period of time, you can see which locks are in their coverage in the app. Once the lock is bound to the gateway, the lock can be managed through the gateway.

4. FAQ

1) How to read operation records?	In the Records of the main interface.
2) Why can't I unlock it after open the passage mode	You need to perform an unlock verification in any method, then the passage mode will take effect.
3) What is the purpose of Auto Lock	You can set how long to lock after unlocking.
4) After installation, touch sensing keyboard, screen no respond	<ul style="list-style-type: none">a) In this case, first check that the positive and negative electrodes of the battery have been installed upside down, whether the battery has enough powerb) Remove the back panel and see if it's connected.c) To eliminate the above situation, you need to remove the lock, check whether the wires of the lock body are squeezed, and the re-wire.
5) Unable to register fingerprint	<p>Check the fingers for dirt or wear, check the fingerprint head on the lock for dirt and oil stains, etc.</p> <p>Check to see if the fingerprint is working properly (Press to see if there is any responds.</p>
6) What is the reason why the smart lock consumes fast power?	<ul style="list-style-type: none">a) Large standby power consumptionb) Short circuit
7) There is no response to pressing the handle on outside the door, and there is unlock normally on inside the door, but the verification is normal, and the motor is normal.	It may be the triangle direction on the clutch was error, please check correction.
8) How many times will the password be locked? How long is it locked?	Enter the wrong password more than 5 times in a row, the keyboard is locked for 5 minus, other ways to can open the door

5. Warranty

Doric New Zealand warrants this product for a period of one (1) year from the date of purchase.

1
YEAR
WARRANTY

This warranty is limited to Doric's option to the repair, or at Doric's option, the replacement of any products proven to be faulty in manufacture or materials, with the same or equivalent product free of charge. Labour charges, transportation and other costs associated with the replacement or re-installation of the parts or product are excluded from this warranty and will not be paid by Doric New Zealand.

INNOVATORS

OF HARDWARE FOR WINDOWS AND DOORS

SYDNEY

38 Redfern St,
Wetherill Park
Sydney, NSW 2164
Australia
Ph: +61 2 9609 2555
www.doric.com.au

AUCKLAND

26/C Triton Drive,
Albany, North Shore,
Auckland 0632
New Zealand
Ph: +64 9 415 5535
www.doric.co.nz

KUALA LUMPUR

No.17 Jalan 51/203A,
Kawasan Perindustrian Tiong Nam,
Seksyen 51, 46050 Petaling Jaya,
Selangor, Malaysia
Ph: +603 777 33 628
www.doric.com.my



DE10

SLIM DIGITAL
HINGED DOOR LOCK